

ANNKE

WE DELIVER SAFETY

ANNKE Pro Series
8 MP IR Varifocal Network Bullet Camera
Quick Start Guide

www.annke.com

Thank you very much for choosing ANNKE.

Our products are supported by the world's first video monitoring manufacturers, and they have adopted military level of protection. It is our top priority to ensure your data safety and offer you a satisfactory service. We strongly recommend that you set up an appropriate password for your device and save it, also set up security questions and reserved email to ensure you can reset password by yourself.

If you have any questions, please feel free to email us at **support@annke.com**, or visit our help center: **help.annke.com**.

Please download ANNKE App, Client software and user manuals from our download center:
<https://www.annke.com/pages/download-center>

About this Manual

The Manual includes instructions for using and managing the product. Pictures, charts, images and all other information hereinafter are for description and explanation only. The information contained in the Manual is subject to change, without notice, due to firmware updates or other reasons. Please find the latest version in the company website .

Please use this user manual under the guidance of professionals.

Legal Disclaimer

REGARDING TO THE PRODUCT WITH INTERNET ACCESS, THE USE OF PRODUCT SHALL BE WHOLLY AT YOUR OWN RISKS. OUR COMPANY SHALL NOT TAKE ANY RESPONSIBILITIES FOR ABNORMAL OPERATION, PRIVACY LEAKAGE OR OTHER DAMAGES RESULTING FROM CYBER ATTACK, HACKER ATTACK, VIRUS INSPECTION, OR OTHER INTERNET SECURITY RISKS; HOWEVER, OUR COMPANY WILL PROVIDE TIMELY TECHNICAL SUPPORT IF REQUIRED.

SURVEILLANCE LAWS VARY BY JURISDICTION. PLEASE CHECK ALL RELEVANT LAWS IN YOUR JURISDICTION BEFORE USING THIS PRODUCT IN ORDER TO ENSURE THAT YOUR USE CONFORMS THE APPLICABLE LAW. OUR COMPANY SHALL NOT BE LIABLE IN THE EVENT THAT THIS PRODUCT IS USED WITH ILLEGITIMATE PURPOSES.

IN THE EVENT OF ANY CONFLICTS BETWEEN THIS MANUAL AND THE APPLICABLE LAW, THE LATER PREVAILS.

Regulatory Information

FCC Information

Please take attention that changes or modification are not expressly approved by the party responsible for compliance could void the user's authority to operate the equipment.

FCC Compliance: This equipment has been tested and found to comply with the limits for a Class A digital device, pursuant to part 15 of the FCC Rules. These limits are designed to provide reasonable protection against harmful interference when the equipment is operated in a commercial environment. This equipment generates, uses, and can radiate radio frequency energy and, if not installed and used in accordance with the instruction manual, may cause harmful interference to radio communications. Operation of this equipment in a residential area is likely to cause harmful interference in which case the user will be required to correct the interference at his own expense.

FCC Conditions

This equipment has been tested and found to comply with the limits for a Class B digital device, pursuant to part 15 of the FCC Rules. These limits are designed to provide reasonable protection against harmful interference in a residential installation. This equipment generates, uses and can radiate radio frequency energy and, if not installed and used in accordance with the instructions, may cause harmful interference to radio communications. However, there is no guarantee that interference will not occur in a particular installation. If this equipment does cause harmful interference to radio or television reception, which can be determined by turning the equipment off and on, the user is encouraged to try to correct the interference by one or more of the following measures:

- Reorient or relocate the receiving antenna.
- Increase the separation between the equipment and receiver.
- Connect the equipment into an outlet on a circuit different from that to which the receiver is connected.
- Consult the dealer or an experienced radio/TV technician for help.

EU Conformity Statement



This product and - if applicable - the supplied accessories too are marked with "CE" and comply therefore with the applicable harmonized European standards listed under the EMC Directive 2004/108/EC, the RoHS Directive 2011/65/EU and Amendment (EU)2015/863.



2012/19/EU (WEEE directive): Products marked with this symbol cannot be disposed of as unsorted municipal waste in the European Union. For proper recycling, return this product to your local supplier upon the purchase of equivalent new equipment, or dispose of it at designated collection points.

For more information see: www.recyclethis.info



2013/56/EU (battery directive): This product contains a battery that cannot be disposed of as unsorted municipal waste in the European Union. See the product documentation for specific battery information. The battery is marked with this symbol, which may include lettering to indicate cadmium (Cd), lead (Pb), or mercury (Hg). For proper recycling, return the battery to your supplier or to a designated collection point.

For more information see: www.recyclethis.info

Safety Instruction

These instructions are intended to ensure that user can use the product correctly to avoid danger or property loss. The precaution measure is divided into [Warnings] and [Cautions].

Warnings: Serious injury or death may occur if any of the warnings are neglected.

Cautions: Injury or equipment damage may occur if any of the cautions are neglected.



Warnings: Follow these safeguards to prevent serious injury or death.



Cautions: Follow these precautions to prevent potential injury or material damage.



Warnings

- Proper configuration of all passwords and other security settings is the responsibility of the installer and/or end-user.
- In the use of the product, you must be in strict compliance with the electrical safety regulations of the nation and region. Please refer to technical specifications for detailed information.
- Input voltage should meet both the SELV (Safety Extra Low Voltage) and the Limited Power Source with 100 to 240 VAC or 12 VDC according to the IEC60950-1 standard. Please refer to technical specifications for detailed information.
- Do not connect several devices to one power adapter as adapter overload may cause over-heating or a fire hazard.
- Please make sure that the plug is firmly connected to the power socket.
- If smoke, odor or noise rise from the device, turn off the power at once and unplug the power cable, and then please contact the service center.

Preventive and Cautionary Tips

- Before connecting and operating your device, please be advised of the following tips:
- Ensure unit is installed in a well-ventilated, dust-free environment.
- Unit is designed for indoor use only. Keep all liquids away from the device.
- Ensure environmental conditions meet factory specifications.
- Ensure unit is properly secured to a rack or shelf. Major shocks or jolts to the unit as a result of dropping it may cause damage to the sensitive electronics within the unit.
- Use the device in conjunction with an UPS if possible.
- Power down the unit before connecting and disconnecting accessories and peripherals.
- A factory recommended HDD should be used for this device.
- Improper use or replacement of the battery may result in hazard of explosion. Replace with the same or equivalent type only. Dispose of used batteries according to the instructions provided by the battery manufacturer.

Table of Contents

EN

1 Appearance Description	1
1.1 Overview.....	1
1.2 Package list	2
2 Installation	2
2.1 Memory Card Installation	3
2.2 Camera Mounting	4
2.3 Zoom and Focus Adjustment	9
2.4 Reset settings	9
3 Setting the Network Camera over the LAN	10
3.1 Wiring	10
3.2 Activating the Camera	10
3.2.1 Activation via Web Browser	11
3.2.2 Activation via SADP Software	11
3.3 Modifying the IP Address	13
4 Accessing via Web Browser	14
5 Operating via ANNKE Vision App	15
5.1 Enable Annke Vision Service on Camera	15
5.1.1 Enable Annke Vision Service via SADP Software.....	15
5.1.2 Enable Annke Vision Service via Web Browser.....	16
5.2 Annke Vision Setup	16
5.3 Adding Camera to Annke Vision	17

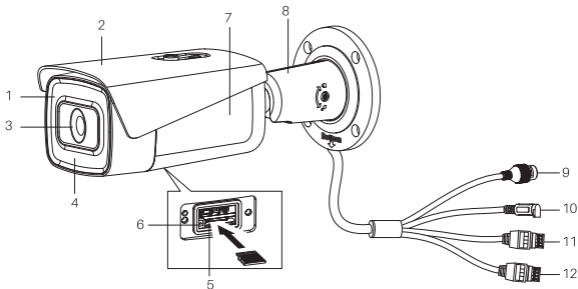
DE

1 Beschreibung des Aussehens	19
1.1 Überblick.....	19
1.2 Paketliste.....	20
2 Mit NVR anschließen	20

1 Appearance Description

1.1 Overview

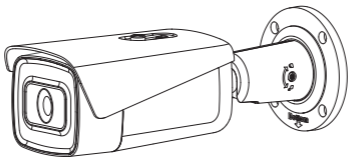
The overview of camera is shown below.



No.	Description	No.	Description
1	Front Cover	7	Camera Body
2	Sun Shield	8	Bracket
3	Lens	9	Network Interface
4	IR LED	10	Power Interface
5	Memory Card Slot	11	Audio interface
6	Reset Button	12	Alarm interface

Note: Press RESET about 10s when the camera is powering on or rebooting to restore the default settings, including the user name, password, IP address, port No., etc.

1.2 Package list



1x Camera



PA4x25

1x Screw Kit



1x Waterproof cap



1x Drill template



1x Wrench



1x Test cable



1x USB Cable



1x CD

2 Installation

Before you start:

- Make sure the device in the package is in good condition and all the assembly parts are included. 3
- The standard power supply is 12 VDC or PoE (802.3af). Make sure your power supply matches with your camera.
- Make sure all the related equipment is power-off during the installation.
- Check the specification of the products for the installation environment.
- Make sure that the wall or ceiling is strong enough to withstand four times the weight of the camera and the bracket.

For the camera that supports IR, you are required to pay attention to the following precaution to prevent IR reflection:

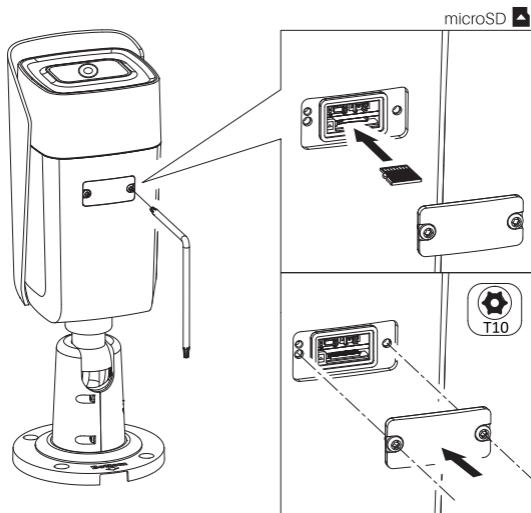
Make sure that there is no reflective surface too close to the camera lens. The IR light from the camera may reflect back into the lens causing reflection.

2.1 Memory Card Installation

This series of cameras support micro SD card installation, if you want recording video to the memory card, you can finish installation follow steps below.

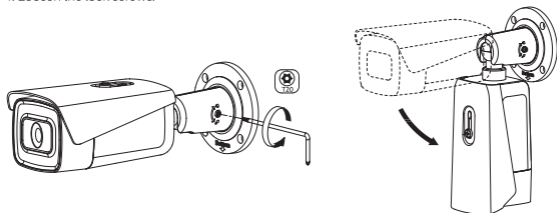
Steps:

1. Loosen the lock screws to remove the cover.
2. Insert the memory card into the micro SD card slot.
3. Tighten the lock screws.

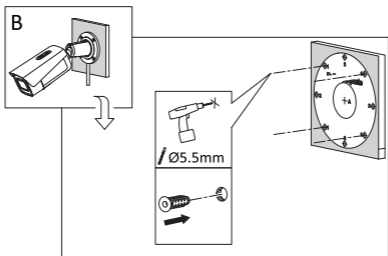
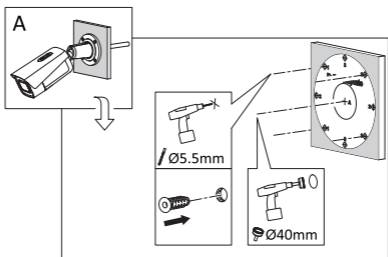


2.2 Camera Mounting

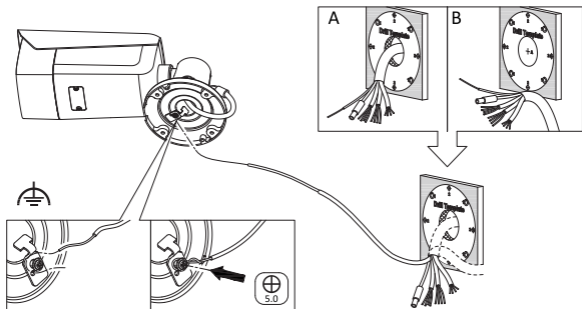
1. Loosen the lock screws.



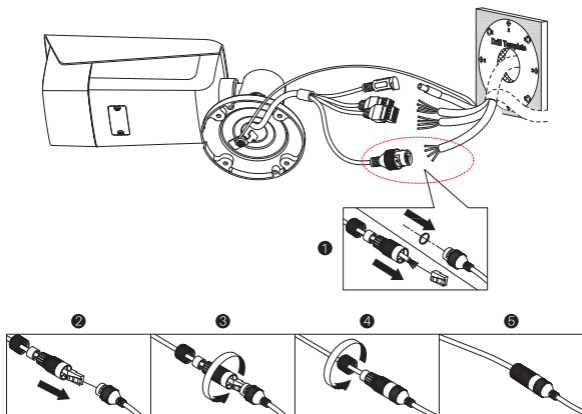
2. Drill screw holes.



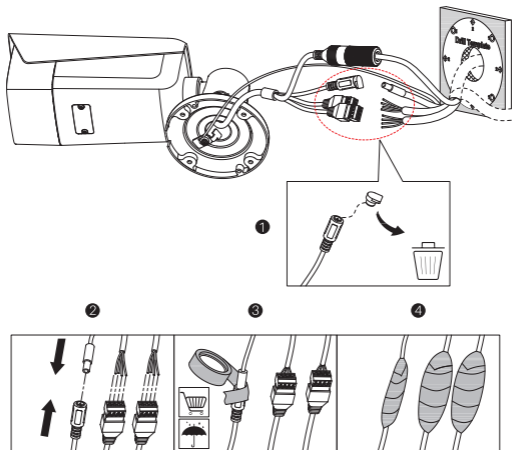
3. Connect the ground wire.



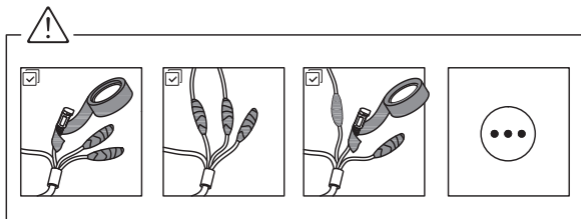
4. Connect network cable and waterproof cap.



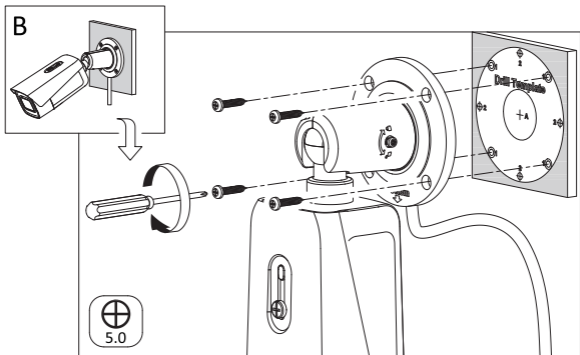
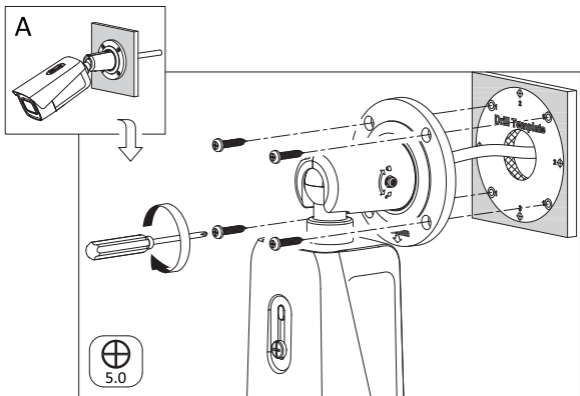
5. Connect DC 12V, audio and alarm cable if you need.



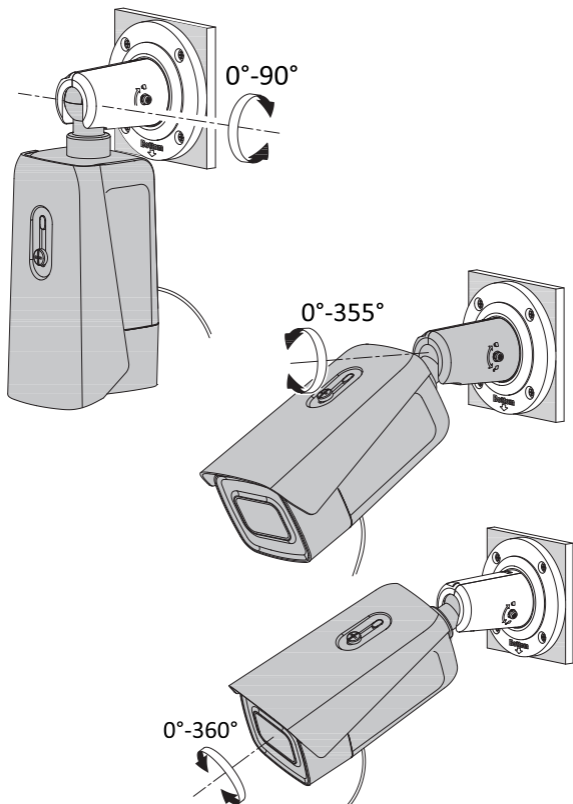
6. Please wrap these joints with waterproof tape, whether it is used or not.



7. Fix the bracket.

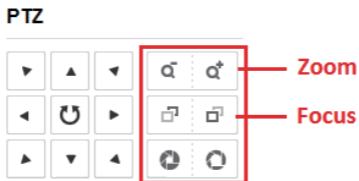


8. Adjust the view angle.



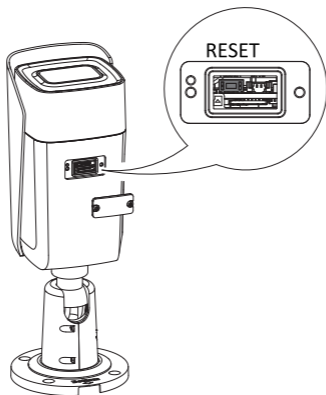
2.3 Zoom and Focus Adjustment

Camera of these types is equipped with a motorized varifocal lens. You can adjust the zoom and focus level on PTZ control panel by visiting the camera via web browser or client software. For detailed steps, refer to the User Manual of Network Camera.



2.4 Reset settings

If you need reset your IP camera when there are something wrong happened, press Reset button for about 10s when the camera is powering on or rebooting to restore the default settings, including the user name, password, IP address, port No., etc.



3 Setting the Network Camera over the LAN

Note:

You shall acknowledge that the use of the product with Internet access might be under network security risks. For avoidance of any network attacks and information leakage, please strengthen your own protection. If the product does not work properly, contact your dealer or the nearest service center for help.

3.1 Wiring

Connect the camera to network according to the following figures.

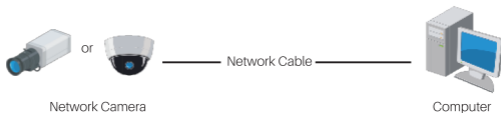
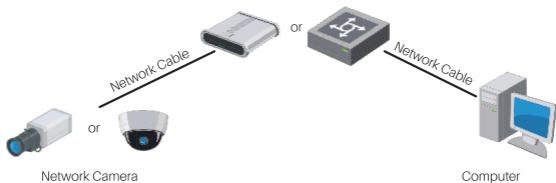


Figure 3-1 Connecting Directly



3.2 Activating the Camera

You are required to activate the camera first by setting a strong password for it before you can use the camera. Activation via web browser, activation via SADP, and activation via client software are all supported. We will take activation via SADP software and activation via web browser as examples to introduce the camera activation.

Note:

Refer to the User Manual of Network Camera for activation via client software.

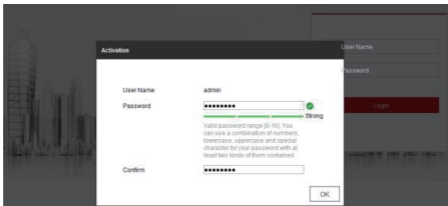
3.2.1 Activation via Web Browser

Steps:

1. Power on the camera. Connect the camera to your computer or the switch/router which your computer connects to.
2. Input the IP address into the address bar of the web browser, and press Enter to enter the activation interface.

Notes:

- The default IP address of the camera is 192.168.1.64.
- The computer and the camera should belong to the same subnet.
- For the camera enables the DHCP by default, you need to use the SADP software to search the IP address.



3. Create a password and input the password into the password field.



STRONG PASSWORD RECOMMENDED- We highly recommend you create a strong password of your own choosing (using a minimum of 8 characters, including upper case letters, lower case letters, numbers, and special characters) in order to increase the security of your product. And we recommend you reset your password regularly, especially in the high security system, resetting the password monthly or weekly can better protect your product.

4. Confirm the password.
5. Click OK to save the password and enter the live view interface.

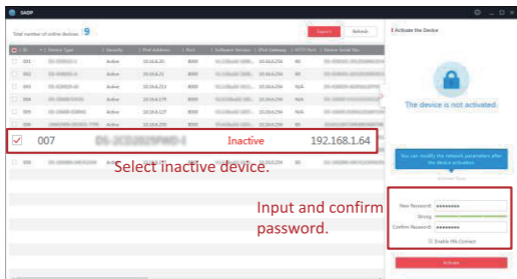
3.2.2 Activation via SADP Software

SADP software is used for detecting the online device, activating the camera, and resetting the password.

Get the SADP software from the supplied disk or the official website, and install the SADP according to the prompts. Follow the steps to activate the camera.

Steps:

1. Run the SADP software to search the online devices.
2. Check the device status from the device list, and select the inactive device.



Note:

The SADP software supports activating the camera in batch. Refer to the user manual of SADP software for details.

3. Create and input the new password in the password field, and confirm the password.



STRONG PASSWORD RECOMMENDED- We highly recommend you create a strong password of your own choosing (using a minimum of 8 characters, including upper case letters, lower case letters, numbers, and special characters) in order to increase the security of your product. And we recommend you reset your password regularly, especially in the high security system, resetting the password monthly or weekly can better protect your product.

Note:

You can enable the Hik-Connect service for the device during activation. Refer to Chapter 5.1 for detailed information.

4. Click Activate to start activation.

You can check whether the activation is completed on the popup window. If activation failed, make sure that the password meets the requirement and try again.

3.3 Modifying the IP Address

Purpose:

To view and configure the camera via LAN (Local Area Network), you need to connect the network camera in the same subnet with your PC.

Use the SADP software or client software to search and change the IP address of the device. We take modifying the IP Address via SADP software as an example to introduce the IP address modification. For IP address modification via client software, refer to the user manual of client software.

Steps:

1. Run the SADP software.
2. Select an active device.
3. Change the device IP address to the same subnet with your computer by either modifying the IP address manually or checking the checkbox of Enable DHCP.

Modify Network Parameters

Enable DHCP
 Enable Hik-Connect

Device Serial No.: XX-XXXXXXXX-XXXXXXXXXXXXXXXXXX

IP Address: 192.168.1.64

Port: 8000

Subnet Mask: 255.255.255.0

Gateway: 192.168.1.1

IPv6 Address: ::

IPv6 Gateway: ::

IPv6 Prefix Length: 0

HTTP Port: 80

Security Verification

Admin Password:

[Modify](#)

[Forgot Password](#)

Note:

You can enable the Hik-Connect service for the device during activation. Refer to Chapter 5.1 for detailed information.

4. Input the admin password and click Modify to activate your IP address modification. The batch IP address modification is supported by the SADP. Refer to the user manual of SADP for details.

4 Accessing via Web Browser

System Requirement:

Operating System: Microsoft Windows XP SP1 and above version

CPU: 2.0 GHz or higher

RAM: 1G or higher

Display: 1024×768 resolution or higher

Web Browser: Internet Explorer 8.0 and above version, Apple Safari 5.0.2 and above version, Mozilla Firefox 5.0 and above version and Google Chrome 18 and above version

Steps:

1. Open the web browser.
2. In the browser address bar, input the IP address of the network camera, and press the Enter key to enter the login interface.

Note:

- The default IP address is 192.168.1.64. You are recommended to change the IP address to the same subnet with your computer.

3. Input the user name and password.

The admin user should configure the device accounts and user/operator permissions properly.

Delete the unnecessary accounts and user/operator permissions.

Note:

The device IP address gets locked if the admin user performs 7 failed password attempts (5 attempts for the user/operator).

4. Click Login.



5. Install the plug-in before viewing the live video and managing the camera. Follow the installation prompts to install the plug-in.

Note:

You may have to close the web browser to finish the installation of the plug-in.

[Please click here to download and install the plug-in.](#) Close the browser when installing the plug-in.

6. Reopen the web browser after the installation of the plug-in and repeat steps 2 to 4 to login.

Note:

For detailed instructions of further configuration, please refer to the user manual of network camera.

5 Operating via ANNKE Vision App

Purpose:

Annke Vision is an application for mobile devices. With the App, you can view live image of the camera, receive alarm notification and so on.

Note:

Annke Vision service is not supported by certain camera models.

5.1 Enable ANNKE Vision Service on Camera

Purpose:

Annke Vision service should be enabled on your camera before using the service. You can enable the service through SADP software or web browser.

5.1.1 Enable ANNKE Vision Service via SADP Software

Steps:

1. Check the checkbox of Enable Annke Vision on:
 - 1). "Activate the Device" page during camera activation, refer to Chapter 3.2.2.
 - 2). Or "Modify Network Parameters" page during modifying IP address, refer to Chapter 3.3.
2. Create a verification code or change the verification code.

The image shows a dialog box titled "Tips" with a red header bar. The main text reads: "Annke Vision To enable H26-Connect service, you need to create a verification code or change the verification code." Below this, there are two input fields. The first is labeled "Verification Code" and contains six asterisks. To its right, a note states: "6 to 12 letters or numbers, case sensitive. You are recommended to use a combination of no less than 8 letters or numbers." The second input field is labeled "Confirm Verification Code" and also contains six asterisks. At the bottom of the dialog, there is a red "Confirm" button and a white "Cancel" button. At the very bottom, a small note says: "Annke Vision The H26-Connect service will require internet access. Please read the [Terms of Service](#) and [Privacy Policy](#), before enabling the service."

Note:

The verification code is required when you add the camera to Annke Vision app.

3. Click and read "Terms of Service" and "Privacy Policy".
4. Confirm the settings.

5.1.2 Enable ANNKE Vision Service via Web Browser

Before you start:

You need to activate the camera before enabling the service. Refer to Chapter 3.2.

Steps:

1. Access the camera via web browser. Refer to Chapter 4.
2. Enter platform access configuration interface: **Configuration > Network > Advanced Settings > Platform Access**.

Enable

Platform Access Mode:

Server IP: Custom

Register Status:

Verification Code:

6 to 12 letters (a to z, A to Z) or numbers (0 to 9), case sensitive. You are recommended to use

3. Select Platform Access Mode as Annke Vision.
4. Check the checkbox of Enable.
5. Click and read "Terms of Service" and "Privacy Policy" in pop-up window.
6. Create a verification code or change the verification code for the camera.

Note:

The verification code is required when you add the camera to Annke Vision app.
7. Save the settings.

5.2 ANNKE Vision Setup

Steps:

1. Download and install the Annke Vision app by searching "Annke Vision" in App Store or Google PlayTM.
2. Launch the app and register for a Annke Vision user account.
3. Log in Annke Vision app after registration.

5.3 Adding Camera to ANNKE Vision

Before you start:

You need to enable the Annke Vision service on camera before adding it to your Annke Vision account. Refer to Chapter 5.1.

Steps:

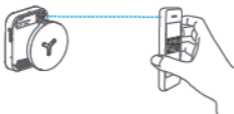
1. Use a network cable to connect the camera with a router if the camera does not support Wi-Fi.




Note:

After the camera connects to the network, please wait one minute before any operation on the camera using Annke Vision app.

2. In the Annke Vision app, tap "+" on the upper-right corner and then scan the QR code of the camera to add the camera. You can find the QR code on the camera or on the cover of the Quick Start Guide of the camera in the package.



Note:

If the QR code is missing or too blur to be recognized, you can also add the camera by tapping the  icon and inputting the camera's serial number.

3. Input the verification code of your camera.

Note:

- The required verification code is the code you create or change when you enabling Annke Vision service on camera.
- If you forget the verification code, you can check the current verification code on Platform Access configuration page via web browser.

4. Follow the prompts to set the network connection and add the camera to your Annke Vision account.

Note:

For detailed information, refer to the user manual of the Annke Vision app.

5.4 Initializing the Memory Card

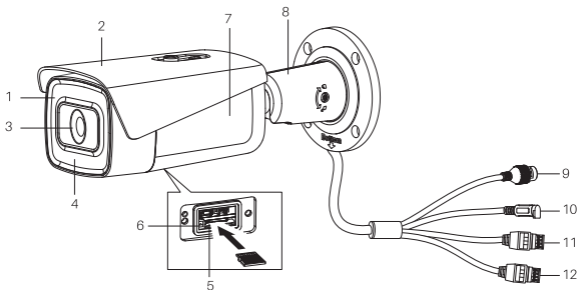
Steps:

Check the memory card status by tapping on the Storage Status in the Device Settings interface. If the memory card status displays as Uninitialized, tap to initialize it. The status will then change to Normal. You can then start recording any event triggered video in the camera such as motion detection.

Beschreibung des Aussehens

1.1 Überblick

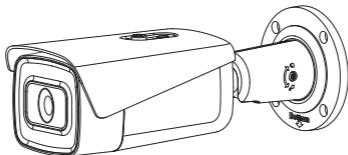
Die Übersicht der Kamera ist unten dargestellt.



Nr.	Beschreibung	Nr.	Beschreibung	Nr.	Beschreibung
1	Vorderseite	5	Speicherkartensteckplatz	9	Netzwerkschnittstelle
2	Sonnenschutz	6	Reset-Knopf	10	Stromschnittstelle
3	Linse	7	Kameragehäuse	11	Audio-Schnittstelle
4	Infrarot-LED	8	Halterung	12	Alarmschnittstelle

Hinweis: Drücken Sie etwa 10 Sekunden lang RESET, wenn die Kamera eingeschaltet oder neu gestartet wird, um die Standardeinstellungen wie Benutzername, Kennwort, IP-Adresse, Portnummer usw. wiederherzustellen.

1.2 Paketliste



1x Kamera



PA4x25

1x Schraubensatz



1x Wasserdichte Kappe



1x Bohrschablone



1x Schlüssel



1x Kabel testen



1x USB Kabel



1x CD

2. Mit NVR anschließen



Hiweise: Bilder sind nur für Referenz gültig

1. Schließen Sie die Kamera mit dem Ende des Netzkabel an, wo es einen wasserdichtem Stecker gibt.
2. Schließen Sie die andere Ende des Netzw erkabel mit dem PoE Netzwerk-Anschluss vom NVR.



For more information,
please visit:

www.annke.com



Manufacturer: Shenzhen Kean Digital co.,Ltd.

Address: Room 1001, Rujun Building, No.105 Center Road,
Bantian Street, Longgang District, Shenzhen, China.
518000

Tech Support Email Address: support@annke.com

HDMI **CE** **FC**  **Made in China**